

## tile specifications

style name	reflect tile
style number	5T139
construction	multi-level pattern cut / loop
fiber	eco solution q® nylon
dye method	100% solution dyed

u.s.

metric

	u.s.	metric
pattern repeat	none	
tufted weight	32.0	1,084.98 g/m <sup>2</sup>
gauge	1/10	39.37 per 10 cm
stitches per inch	9.0	35.43 per 10 cm
finished pile thickness	0.137	3.48 mm
total thickness	0.345	8.76 mm
average density	8409	15.66 kilotex
product size	18" x 36"	45.72 cm x 91.44 cm
primary backing	synthetic	
secondary backing	ecoworx® tile	
protective treatments	ssp® shaw soil protection	

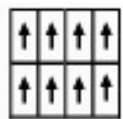
## testing

radiant panel	Class I
nbs smoke	less than 450
electrostatic propensity	less than 3.5 kv

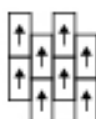
## warranties

lifetime commercial limited

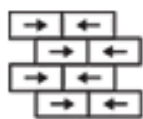
## installation method



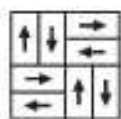
monolithic



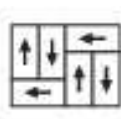
ashlar



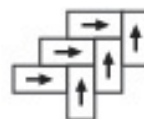
brick



basketweave



half basketweave



herringbone



boxed in

## coordinating products

create tile, renew tile, drift tile, explore tile, linger tile, zone tile

## environmental certification

green label plus certification number	glp9968
nsf140 gold	
cradle to cradle v3.1 silver certified	



Specifications are subject to nominal manufacturing variances.  
Material supply and/or manufacturing processes may necessitate changes without notice.

shawcontractgroup.com | 1 800.257.7429 | shawcontractgroup.cn | +86 400 800 7429 (Asia Pacific)

eco impacts

**end of life**

**environmental guarantee**

free pick up & recycling

To recycle call 800.509.Shaw or +86 400 800 Shaw (Asia Pacific)

**materials**

**ingredients**

face fiber	nylon 6
dye method	100% solution dyed
backing	polyolefin composite
surface treatments	non c8 fluorocarbon chemistry
does not contain PVC, phthalates, or PBD/PBDE	

**recycled content**

total recycled content (by weight)	40.4 %
pre-consumer	40.4 %
post-consumer	0.0 %
bio-based/rapidly renewable content (by weight)	0.0 %
packaging	100% recyclable
country of origin (manufacturer)	USA

Meets or exceeds all local and national regulations in country of manufacture.  
 Manufactured in an ISO9001 & ISO14001 certified facility or equivalent.  
 Recycled content is calculated using system allocation, mass balance, and direct insertion.  
 The actual recycled content in this product will likely vary. For more information email  
[info@shawgreenedge.com](mailto:info@shawgreenedge.com).

**third party certifications**

Cradle to Cradle Certified	V3.1 silver
NSF 140	gold certified
CRI green label plus	glp9968
USGBC LEED	contributes