

tile specifications

style name	folded edge tile
style number	5T062
construction	multi-level pattern loop
fiber	eco solution q® nylon
dye method	77% solution dyed / 23% yarn dyed

	u.s.	metric
pattern repeat	none	
tufted weight	24.0	813.74 g/m ²
gauge	1/12	47.24 per 10 cm
stitches per inch	10.5	41.34 per 10 cm
finished pile thickness	0.111	2.82 mm
total thickness	0.267	6.78 mm
average density	7784	14.49 kilotex
product size	18" x 36"	45.72 cm x 91.44 cm
primary backing	synthetic	
secondary backing	ecoworx® tile	
protective treatments	ssp® shaw soil protection	
gsa approved product	yes	



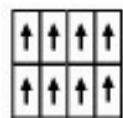
testing

radiant panel	Class I
nbs smoke	less than 450
electrostatic propensity	less than 3.5 kv

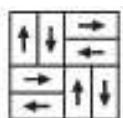
warranties

lifetime commercial limited

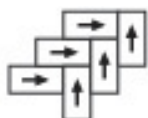
installation method



monolithic



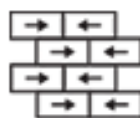
basketweave



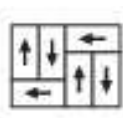
herringbone



boxed in



brick



half basketweave



ashlar

coordinating products

slide, angle tile, expand tile, folded tile

environmental certification

nsf140 gold

cradle to cradle v3.1 silver certified



Specifications are subject to nominal manufacturing variances.

Material supply and/or manufacturing processes may necessitate changes without notice.

shawcontractgroup.com | 1 800.257.7429 | shawcontractgroup.cn | +86 400 800 7429 (Asia Pacific)

eco impacts

end of life

environmental guarantee

free pick up & recycling

To recycle call 800.509.Shaw or +86 400 800 Shaw (Asia Pacific)

materials

ingredients

face fiber	nylon 6
dye method	70% solution dyed/30% yarn dyed
backing	polyolefin composite
surface treatments	non c8 flouorocarbon chemistry
does not contain PVC, phthalates, or PBD/PBDE	

recycled content

total recycled content (by weight)	41.7 %
pre-consumer	41.7 %
post-consumer	0.0 %
bio-based/rapidly renewable content (by weight)	0.0 %
packaging	100% recyclable
country of origin (manufacturer)	USA

Meets or exceeds all local and national regulations in country of manufacture.

Manufactured in an ISO9001 & ISO14001 certified facility or equivalent.

Recycled content is calculated using system allocation, mass balance, and direct insertion.

The actual recycled content in this product will likely vary. For more information email info@shawgreenedge.com.

third party certifications

Cradle to Cradle Certified	V3.1 silver
NSF 140	gold certified
CRI green label plus	certified glp9968
USGBC LEED	contributes