

**tile specifications**

style name	analog tile
style number	5T126
construction	multi-level pattern loop
fiber	eco solution q® nylon
dye method	100% solution dyed

**u.s.**

**metric**

	u.s.	metric
pattern repeat	none	
tufted weight	18.0	610.30 g/m <sup>2</sup>
gauge	1/12	47.24 per 10 cm
stitches per inch	10	39.37 per 10 cm
finished pile thickness	0.092	2.34 mm
total thickness	0.275	6.99 mm
average density	7743	14.42 kilotex
product size	18" x 36"	45.72 cm x 91.44 cm
primary backing	synthetic	
secondary backing	ecoworx® tile	
protective treatments	ssp® shaw soil protection	

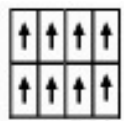
**testing**

radiant panel	Class I
nbs smoke	less than 450
electrostatic propensity	less than 3.5 kv

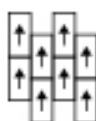
**warranties**

lifetime commercial limited

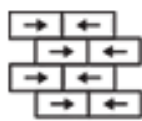
**installation method**



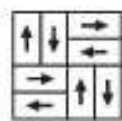
monolithic



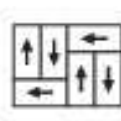
ashlar



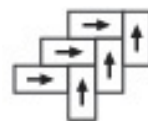
brick



basketweave



half basketweave



herringbone



boxed in

**coordinating products**

distort tile, glitch tile, manipulate tile

**environmental certification**

nsf140 gold

cradle to cradle v3.1 silver certified



Specifications are subject to nominal manufacturing variances. Material supply and/or manufacturing processes may necessitate changes without notice.

## eco impacts

---

### end of life

#### environmental guarantee

free pick up & recycling

To recycle call 800.509.Shaw or +86 400 800 Shaw (Asia Pacific)

---

### materials

#### ingredients

face fiber	nylon 6
dye method	100% solution dyed
backing	polyolefin composite
surface treatments	non c8 fluorocarbon chemistry
does not contain PVC, phthalates, or PBD/PBDE	

#### recycled content

total recycled content (by weight)	42.9 %
pre-consumer	42.9 %
post-consumer	0.0 %
bio-based/rapidly renewable content (by weight)	0.0 %
packaging	100% recyclable
country of origin (manufacturer)	USA

Meets or exceeds all local and national regulations in country of manufacture.

Manufactured in an ISO9001 & ISO14001 certified facility or equivalent.

Recycled content is calculated using system allocation, mass balance, and direct insertion.

The actual recycled content in this product will likely vary. For more information email [info@shawgreenedge.com](mailto:info@shawgreenedge.com).

---

### third party certifications

Cradle to Cradle Certified	V3.1 silver
NSF 140	gold certified
CRI green label plus	certified glp9968
USGBC LEED	contributes